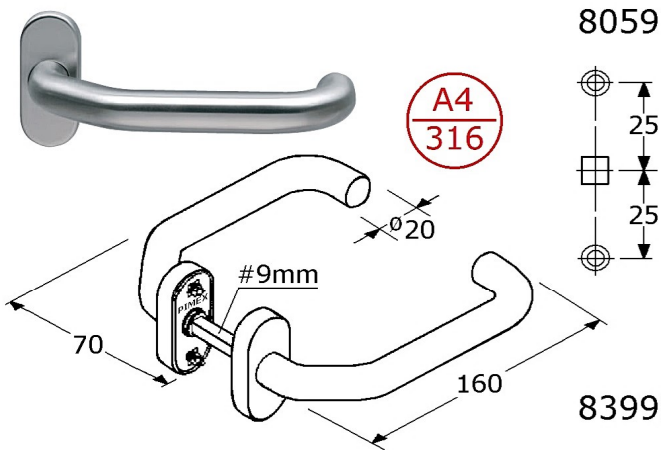
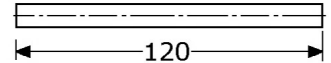


805272

door lever handles  
stainless steel 316/A4 satin polished  
also for narrow profile doors, total highness 70mm  
with stainless steel 316/A4 handles  $\varnothing 20 \times 160 \text{ mm}$   
### nice finish & for all kind of situations,  
also for doors with small backset ###  
door handles rotatably fixed from backside  
with loose steel square #8x8x115mm  
on small rose stainless steel 316/A4 68x31x11mm  
unvisable mounting with steel nickel underrose  
underrose: with 2 holes c.t.c. 50mm (for M4)  
in boxes of 1 pair

839289

PIWAX square spindle  
#8x8x120mm, no hole  
stainless steel 316/A4

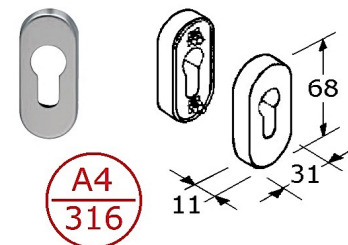
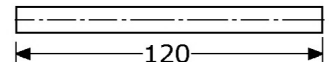


805972

door lever handles  
stainless steel 316/A4 satin polished  
also for narrow profile doors, total highness 70mm  
with stainless steel 316/A4 handles  $\varnothing 20 \times 160 \text{ mm}$   
### nice finish & for all kind of situations,  
also for doors with small backset ###  
door handles rotatably fixed from backside  
with loose steel square #9x9x115mm  
on small rose stainless steel 316/A4 68x31x11mm  
unvisable mounting with steel nickel underrose  
underrose: with 2 holes c.t.c. 50mm (for M4)  
in boxes of 1 pair

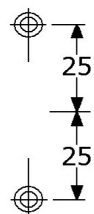
839999

PIWAX square spindle  
#9x9x120mm, no hole  
stainless steel 304/A2

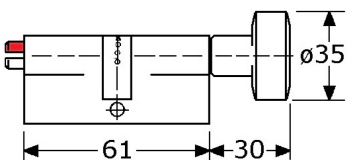


695272

roses for profile cylinder 17mm/EURO  
stainless steel 316/A4 satin polished  
rounded, 68x31mm, highness 11mm  
unvisable mounting with black nylon underrose  
underrose: with 2 holes c.t.c. 50mm (for M4)  
in boxes of 2 Pcs (=1 pair)



for stainless steel locks  
with small backset  
25mm or 55mm,  
see page GY-612 (group 06)  
and page GY-618 (group 06)



692499

profile cylinder for bathroom use  
brass nickel plated, totally 61mm ( $30\frac{1}{2} + 30\frac{1}{2} \text{ mm}$ )  
with red/white indicator  
with removable nickel knob

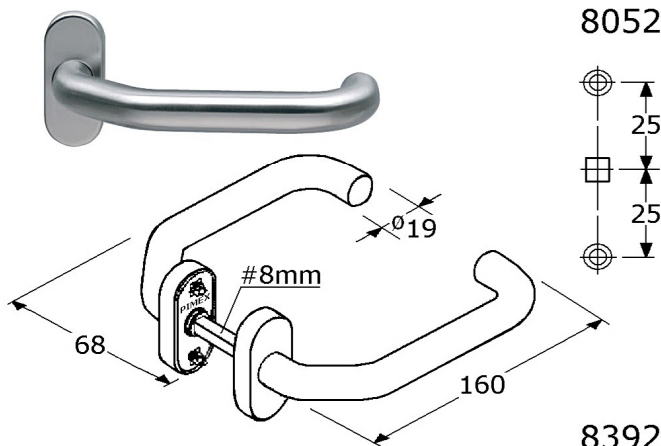
for bathroom situation



for other profile cylinder,  
see page GF-694 and GF-695



**PIMEX B.V.**  
Coenecoop 131  
2741 PJ WADDINXVEEN (NL)  
Tel. (31) 182 - 61 11 66  
Email: info@pimex.nl

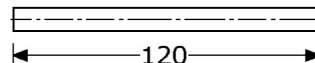


**805263**

door lever handles  
stainless steel 304/A2 satin polished  
also for narrow profile doors, total highness 68mm  
with stainless steel handles  $\varnothing 19 \times 160 \text{ mm}$   
### nice finish & for all kind of situations,  
also for doors with small backset ###  
door handles rotatably fixed from backside  
door handles spring loaded (pair= left+right)  
with loose steel square #8x8x115mm  
on small rose stainless steel 304/A2 64x34x10mm  
unvisable mounting with steel nickel underrose  
underrose: with 2 holes c.t.c. 50mm (for M4)  
only in boxes of 1 pair (pair= left+right)

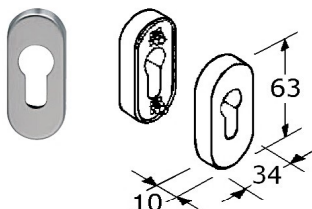
**839288**

PIWAX square spindle  
#8x8x120mm, no hole  
stainless steel 304/A2



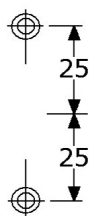
**839229**

PIWAX adapter bushes brass  
for door lever handle #8mm to use in square #9mm

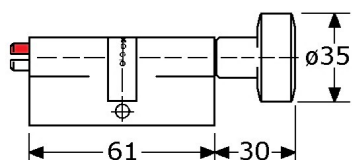


**695270**

roses for profile cylinder 17mm/EURO  
stainless steel 304/A2 satin polished  
rounded, 63x34mm, highness 10mm  
unvisable mounting with steel nickel underrose  
underrose: with 2 holes c.t.c. 50mm (for M4)  
in boxes of 2 Pcs (=1 pair)



for stainless steel locks  
with small backset  
25mm or 55mm,  
see page GY-612 (group 06)  
and page GY-618 (group 06)

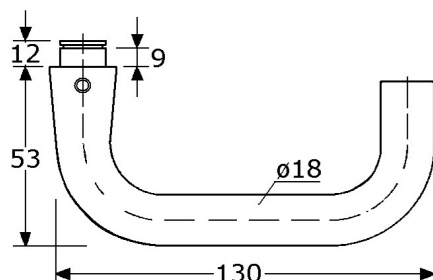
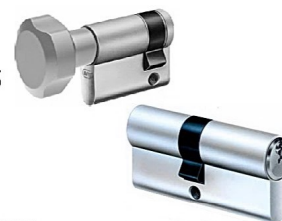


**692499**

profile cylinder for bathroom use  
brass nickel plated, totally 61mm ( $30\frac{1}{2} + 30\frac{1}{2} \text{ mm}$ )  
with red/white indicator  
with removable nickel knob



for other profile cylinder,  
see page GF-694 and GF-695

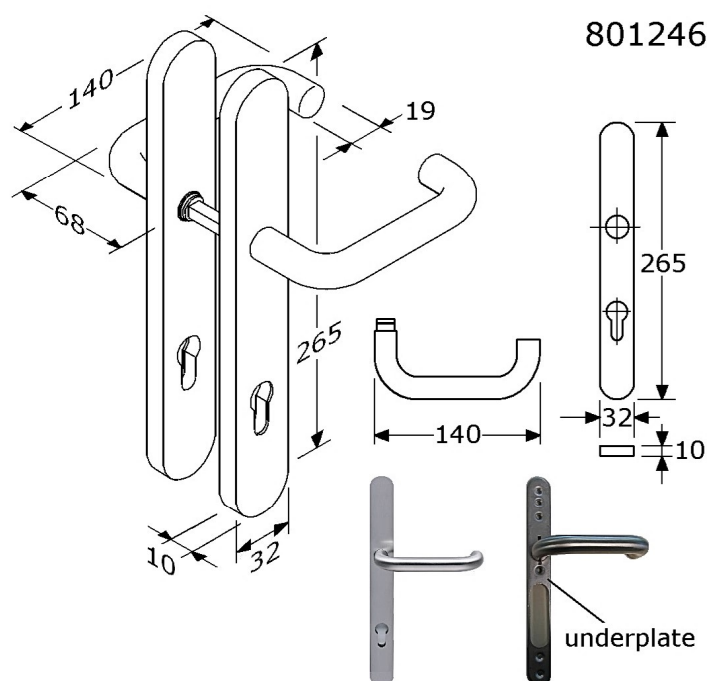


**821223**

door lever handles without roses  
stainless steel 304/A2 satin polished  
highness 53mm, handles  $\varnothing 18 \times 130 \text{ mm}$   
with fixed steel square #8mm + fixing screw  
diameter for mounting  $\varnothing 18 \text{ mm}$   
### these handles can be used with  
stainless steel locks with lock box  
likes lock 631263, see page GY-631 ###  
in boxes of 1 pair



**PIMEX B.V.**  
Coenecoop 131  
2741 PJ WADDINXVEEN (NL)  
Tel. (31) 182 - 61 11 66  
Email: info@pimex.nl



**801246**

door lever handles "U"-model  
stainless steel 304/A2 satin polished  
also for narrow profile doors, total highness 68mm  
with stainless steel handles  $\varnothing 19 \times 140 \text{ mm}$   
### nice finish & for all kind of situations,  
also for doors with small backset ###  
door handles rotatably fixed from backside  
door handles spring loaded (pair= left+right)  
with loose steel square #8x8x115mm  
on long backplate SS-304/A2 265x32x10mm  
with entry for profile cylinder c.t.c. 72mm  
unvisable mounting with stainless steel underplate  
\*\*\* so complete stainless steel !!!\*\*\*  
underplate with 6 countersunk screwholes (4mm)  
in boxes of 1 pair (pair= left+right)

also possible on request:

- with other measures, like c.t.c. 75mm or 78mm
- with square #9x9mm (801946)

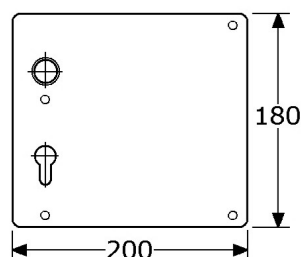
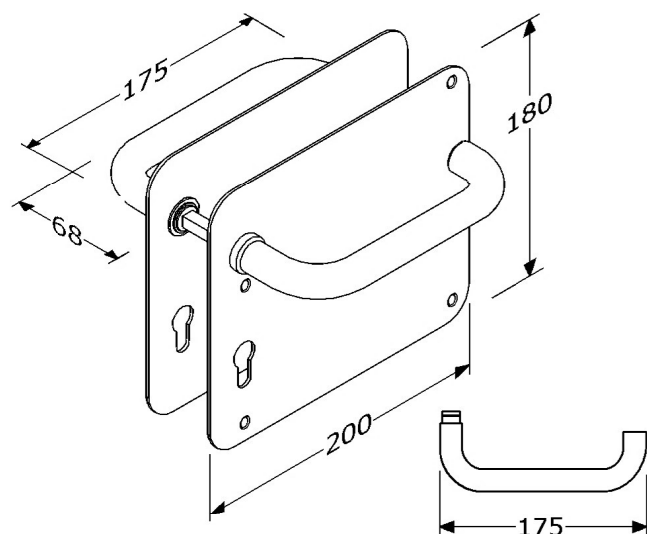


**802256**

door lever handles "U"-model  
stainless steel 304/A2 satin polished  
up-lay 2mm, total highness 68mm  
with stainless steel handles  $\varnothing 19 \times 175 \text{ mm}$   
door handles rotatably fixed from backside  
door handles not spring loaded (pair= left+right)  
with loose steel square #8x8x115mm  
on width backplate SS-304/A2 180x200x2mm  
with entry for profile cylinder c.t.c. 72mm  
screw-on mounting (no underplates)  
\*\*\* so complete stainless steel !!!\*\*\*  
with 4 countersunk screwholes (4mm)  
in boxes of 1 pair (pair= left+right)

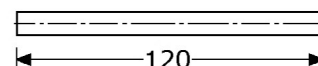
also possible on request:

- with other measures, like c.t.c. 75mm or 78mm
- with square #9x9mm (802956)



**839288**

PIWAX square spindle  
#8x8x120mm, no hole  
stainless steel 316/A4



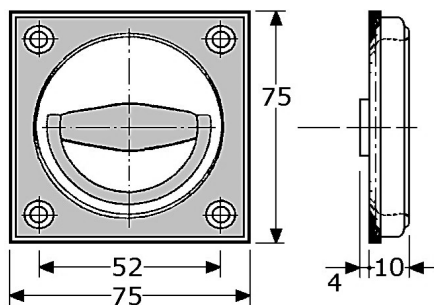
for profile cylinder,  
see page GF-694 and GF-695



**PIMEX B.V.**  
Coenecoop 131  
2741 PJ WADDINXVEEN (NL)  
Tel. (31) 182 - 61 11 66  
Email: info@pimex.nl



# FLUSH DOOR LEVER HANDLE, stainless steel



for stainless steel locks  
with hub #7x7mm, see the  
pages GY-680a/b and GY-686a/b

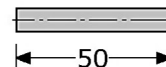
828270



PIWAX flush door lever handle 75x75mm  
stainless steel 304/A2 satin polished  
with black rubber isolation plate  
total high 10mm, not for built in  
with stainless steel handle (without stop)  
backsite: aluminium hub with hole #7x7mm  
(square spindles has to be ordered separately)  
minimum hole in the plate  $\varnothing$ 16mm  
with 4 countersunk screwholes (4mm/M4)  
in boxes of 10 Pcs.

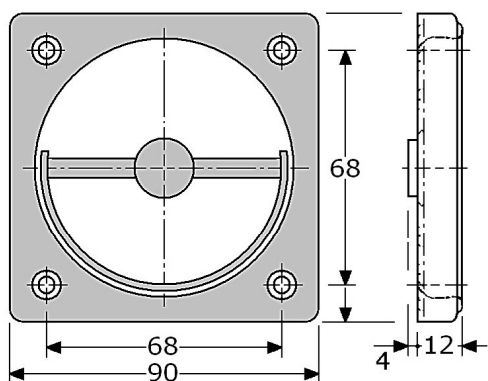
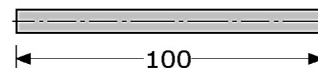
682220

PIWAX square spindle #7x7x50mm  
stainless steel 316/A4, no hole



682221

PIWAX square spindle  
#7x7x100mm, no hole  
stainless steel 316/A4



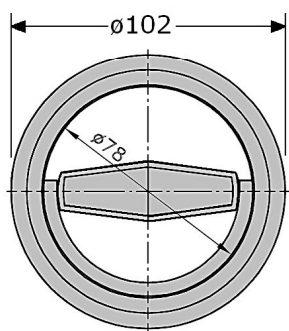
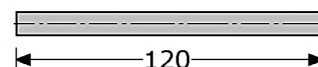
828273



PIWAX flush door lever handle 90x90mm  
stainless steel 304/A2 satin polished  
with black rubber isolation plate  
total high 12mm, not for built in  
with stainless steel handle (without stop)  
backsite: aluminium hub with hole #8x8mm  
(square spindles has to be ordered separatel  
minimum hole in the plate  $\varnothing$ 16mm  
with 4 countersunk screwholes (4mm/M4)  
in boxes of 10 Pcs.

839288

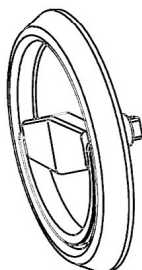
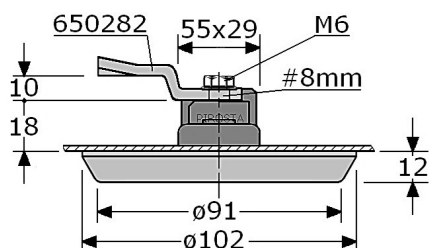
PIWAX square spindle  
#8x8x120mm, no hole  
stainless steel 304/A2



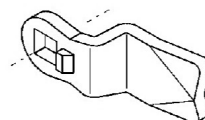
828265



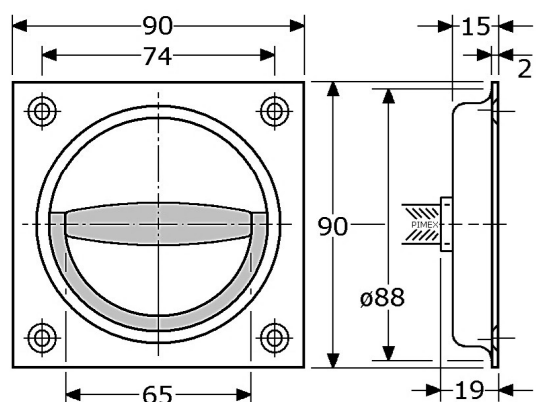
flush door lever handle  $\varnothing$ 102mm  
stainless steel 316ti/1.4571  
handle+ring polished, inner circle unpolished  
total high 12mm, not for built in  
with stainless steel handle (without stop)  
seawater continually, with inside black EPDM ring  
backsite: total stainless steel,  
with demontable house 55x29mm (with packing)  
with short square spindle #8mm for cam with M6  
for stainless steel cam (to be ordered separately)  
for using cams: 180° action limited  
minimum hole in the plate 50x25mm  
no holes, unvisable mounting  
in boxes of 1 Pcs.



cams in stainless steel 316/A4 (see page GY-650a)  
- 650280 = flat (18mm)  
- 650281 = type +4mm (18+4=22mm)  
- 650282 = type +10mm (18+10=28mm)



PIMEX B.V.  
Coenecoop 131  
2741 PJ WADDINXVEEN (NL)  
Tel. (31) 182 - 61 11 66  
Email: info@pimex.nl



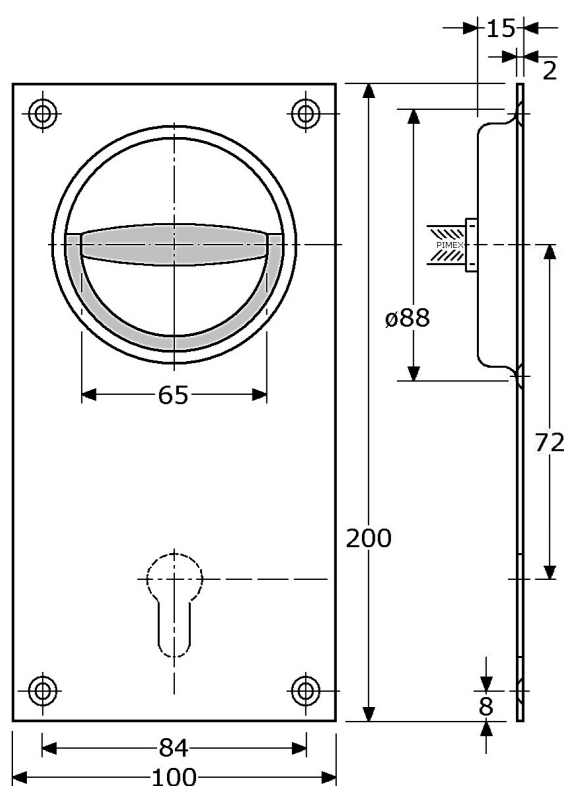
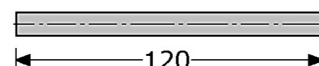
**828290**



flush door lever handle 90x90mm  
stainless steel 304/A2 satin polished  
up-lay 2mm, built in depth 2+13=15mm  
with stainless steel handle (without stop)  
backsite: hub with hole #8x8mm  
(square spindles has to be ordered separately)  
hole in the plate ø88mm  
with 4 countersunk screwholes (4mm/M4)  
in boxes of 6 Pcs.

**839288**

PIWAX square spindle  
#8x8x120mm, no hole  
stainless steel 304/A2



**828298**



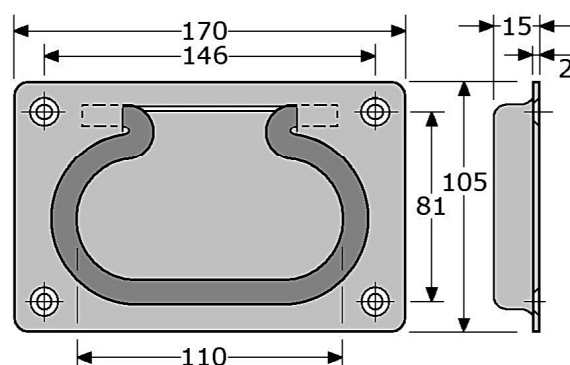
flush door lever handle 100x200mm  
stainless steel 304/A2 satin polished  
up-lay 2mm, built in depth 2+13=15mm  
with stainless steel handle (without stop)  
backsite: hub with hole #8x8mm  
(square spindles has to be ordered separately)  
hole in the plate ø88mm  
with entry for profile cylinder c.t.c. 72mm  
for left and right use  
links en rechts bruikbaar  
with 4 countersunk screwholes (4mm/M4)

also possible:

- with other measures, like c.t.c. 75mm, 78mm or maximum 92mm
- with hub #9x9mm



**544204**  
compression latches  
(see page GY-545a)



**848232** flush lift ring pull  
(see page GY-849)



**PIMEX B.V.**  
Coenecoop 131  
2741 PJ WADDINXVEEN (NL)  
Tel. (31) 182 - 61 11 66  
Email: info@pimex.nl