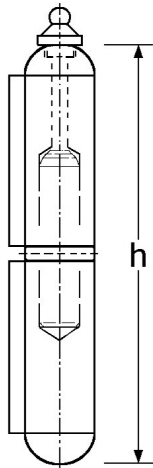
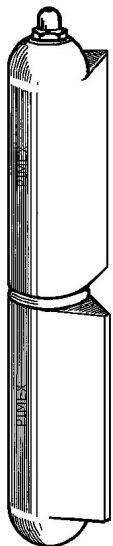


456511
456512
456514
456515
456517
456518

weld-on hinges
aluminium (AlMg Si 0,5)
profile with welding point, top rounded head
with fixed (in under part) pin stainless steel 303/1.4305
with massive washer stainless steel 303/1.4305

| high | profile | fixed pin | in boxes of |
|-------|---------|-----------|-------------|
| 60mm | 12x10mm | ∅ 6mm | 20 Pcs |
| 80mm | 16x13mm | ∅ 8mm | 20 Pcs |
| 100mm | 20x16mm | ∅10mm | 20 Pcs |
| 120mm | 20x16mm | ∅11mm | 20 Pcs |
| 150mm | 25x20mm | ∅13mm | 10 Pcs |
| 180mm | 25x20mm | ∅14mm | 10 Pcs |

for weld-on hinges in stainless steel, see page GY-348a
for weld-on hinges in steel, see page GF-449a
also possible: combination aluminium + stainless steel

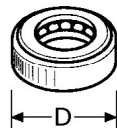
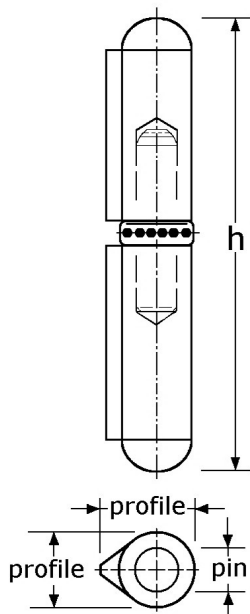
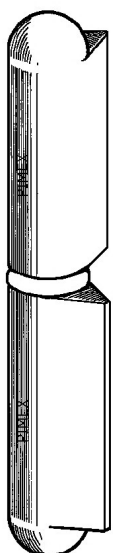


456562
456564
456565
456567

weld-on hinges
aluminium (AlMg Si 0,5)
profile with welding point, top rounded head
with stainless steel (screwed) grease/lubricating nipple
with oil room & oil canal
with fixed (in under part) pin stainless steel 303/1.4305
with massive washer stainless steel 303/1.4305

| high | profile | fixed pin | in boxes of |
|-------|---------|-----------|-------------|
| 80mm | 16x13mm | ∅ 8mm | 20 Pcs |
| 100mm | 20x16mm | ∅10mm | 20 Pcs |
| 120mm | 20x16mm | ∅11mm | 100 Pcs |
| 150mm | 25x20mm | ∅13mm | 10 Pcs |

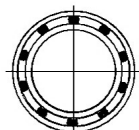
for weld-on hinges in stainless steel, see page GY-348b
for weld-on hinges in steel, see page GF-449b



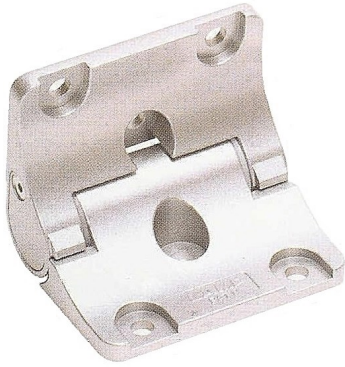
456584
456587

weld-on hinges
aluminium (AlMg Si 0,5)
profile with welding point, top rounded head
for left and right use
with fixed (in under part) pin stainless steel 303/1.4305
with ball bearing stainless steel 304/1.4301
(outside & inside SS-304/A2, balls SS-420 hardened)

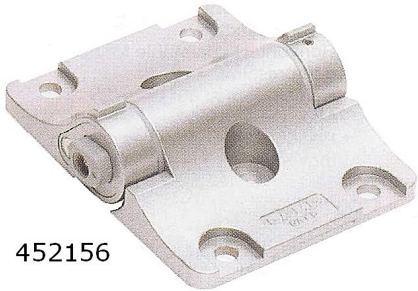
| high | profile | fixed pin | D | in boxes of |
|-------|---------|-----------|---------|-------------|
| 104mm | 20x16mm | ∅10mm | ∅17,5mm | 20 Pcs |
| 155mm | 25x20mm | ∅13mm | ∅22mm | 10 Pcs |



PIMEX B.V.
Coenecoop 131
2741 PJ WADDINXVEEN (NL)
Tel. (31) 182 - 61 11 66
Email: info@pimex.nl

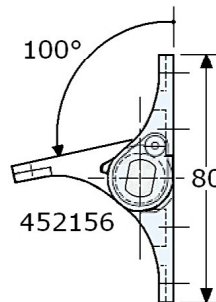
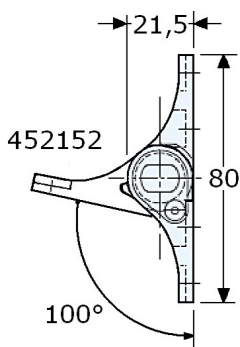
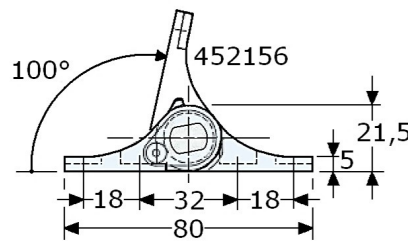
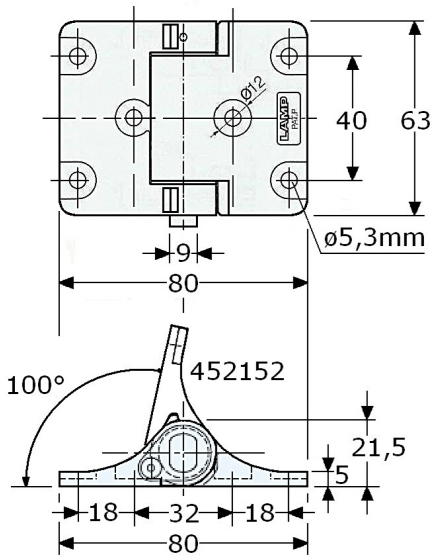


452152 hinges 63x80x5mm with soft-close dampening zinc alloy silver plated, nice look with build in white plastic shaft dampening direction: counter clockwise (80° to 180°) with torque 10-17 kgf/cm (friction not adjustable) the hinge can be used from 0°C. till +40°C. surface mounting maximum hook 100° with extra power hold in begin position 80° from 80°-110° only working with enough gravity with extra power from 170° to 180° knuckle $\varnothing 21,5$ mm, total highness 21,5mm with each 3+3 lower screwholes $\varnothing 5,4$ mm

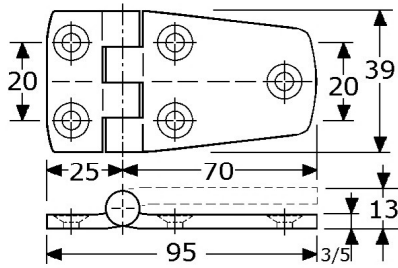


452156

452156 hinges 63x80x5mm with soft-close dampening zinc alloy silver plated, nice look with build in grey plastic shaft dampening direction: clockwise (from 180° to 80°) with torque 10-17 kgf/cm (friction not adjustable) the hinge can be used from 0°C. till +40°C. surface mounting maximum hook 100° with extra power hold in begin position 180° from 0°-160° only working with enough gravity with extra power from 90° to 80° knuckle $\varnothing 21,5$ mm, total highness 21,5mm with each 3+3 lower screwholes $\varnothing 5,4$ mm



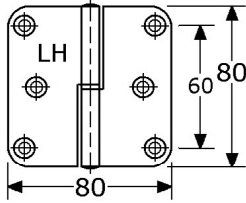
PIMEX B.V.
Coenecoop 131
2741 PJ WADDINXVEEN (NL)
Tel. (31) 182 - 61 11 66
Email: info@pimex.nl



452595

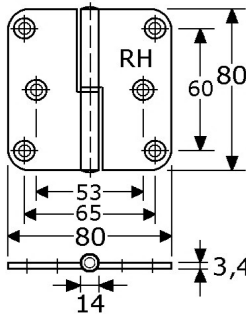


solid screw-on hinges 39x95mm
aluminium anodised (AlMg Si 0,5)
height 39mm, width 25+70=95mm
flat, thickness 3-5mm, fixed nylon pin ø6mm
5-knuckles ø10mm, rounded
with 3+2 countersunk screwholes
in box of 7 Pcs. (selling-off)
(complete stainless steel hinges, see page GY-323a)



453521

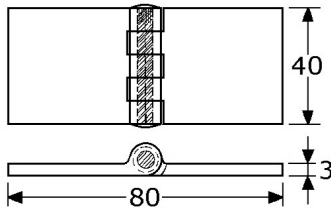
lift-off hinges 80x80x3,4mm, LH
aluminium anodised (AlMg Si 0,5)
both leaves swaged, knuckle ø14mm
with stainless steel pin ø8mm
with white plastic bushing and white nylon ring
with 6 countersunk screwholes (5mm/M5)
in boxes of 25 Pcs.



453522



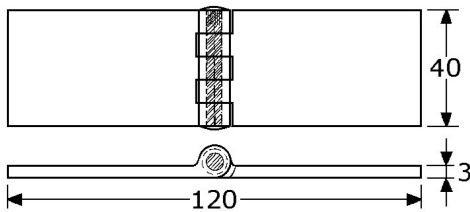
lift-off hinges 80x80x3,4mm, RH
aluminium anodised (AlMg Si 0,5)
both leaves swaged, knuckle ø14mm
with stainless steel pin ø8mm
with white plastic bushing and white nylon ring
with 6 countersunk screwholes (5mm/M5)
in boxes of 25 Pcs.



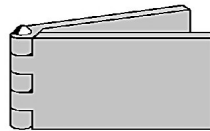
454541



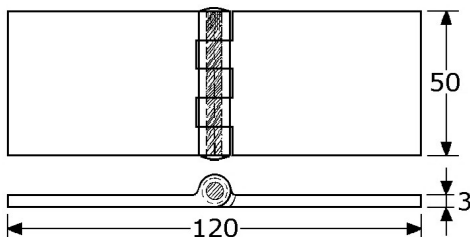
solid profile weld-on hinges 40x80x3mm
aluminium anodised (AlMg Si 0,5)
height 40mm, width 40+40=80mm
flat, with fixed stainless steel pin ø4mm
5-knuckles ø8mm, rectangular, no holes
in boxes of 12 Pcs.
(complete stainless steel hinges, see page GY-341b)
(for profile hinges out of steel, see page GF-440)



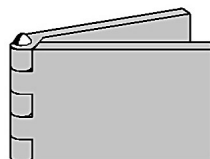
454542



solid profile weld-on hinges 40x120x3mm
aluminium anodised (AlMg Si 0,5)
height 40mm, width 60+60=120mm
flat, with fixed stainless steel pin ø4mm
5-knuckles ø8mm, rectangular, no holes
in boxes of 100 Pcs. (delivery on request)
(complete stainless steel hinges, see page GY-341b)
(for profile hinges out of steel, see page GF-440)



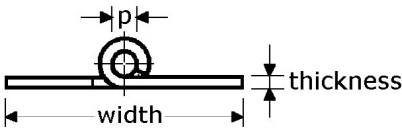
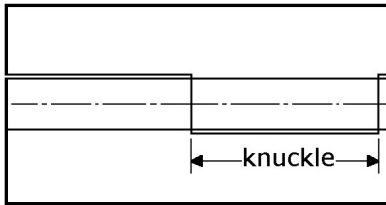
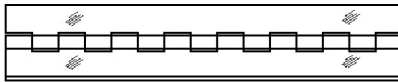
454552



solid profile weld-on hinges 50x120x3mm
aluminium anodised (AlMg Si 0,5)
height 50mm, width 60+60=120mm
flat, with fixed stainless steel pin ø4mm
5-knuckles ø8mm, rectangular, no holes
in boxes of 100 Pcs. (delivery on request)
(complete stainless steel hinges, see page GY-341b)
(for profile hinges out of steel, see page GF-440)



PIMEX B.V.
Coenecoop 131
2741 PJ WADDINXVEEN (NL)
Tel. (31) 182 - 61 11 66
Email: info@pimex.nl



- 45512510
- 45514015
- 45514020
- 45515015
- 45516020
- 45518020

piano hinges
aluminium (AlMg3)
flat rolled, without screwholes
with (fixed) aluminium pin
knuckles 30mm (for thickness 1,0mm: knuckles 15mm)



| length | width | thick | pin (p) | in boxes of |
|--------|-------|-------|----------------|-------------|
| 3500mm | 25mm | 1,0mm | 1,75 aluminium | 105 Mtr |
| 3500mm | 40mm | 1,5mm | 3mm aluminium | 52,5 Mtr |
| 3500mm | 40mm | 2,0mm | 6mm aluminium | 35 Mtr |
| 3500mm | 50mm | 1,5mm | 3mm aluminium | 52,5 Mtr |
| 3500mm | 60mm | 2,0mm | 6mm aluminium | 35 Mtr |
| 3500mm | 80mm | 2,0mm | 6mm aluminium | 17,5 Mtr |

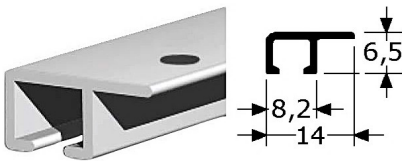
also possible: - with screwholes (on request)
- other measures (on request)



piano hinges in stainless steel in many sizes in stock,
see page GY-350 & GY-351 (group 03)

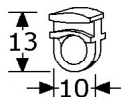
for steel piano hinges, see page GF-442

other long products in aluminium:



941501

curtain rail 14x6,5mm
aluminium profile
small type, for yacht interior use
in boxes of 100 Mtr (20 Pcs. of 5 meter)



941503

curtain rail runners white nylon
(only in boxes of 1000 Pcs.)



941506

curtain rail end stops steel nickel
(only in boxes of 100 Pcs.)

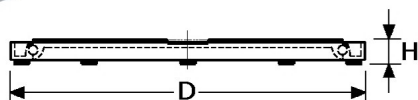


925503

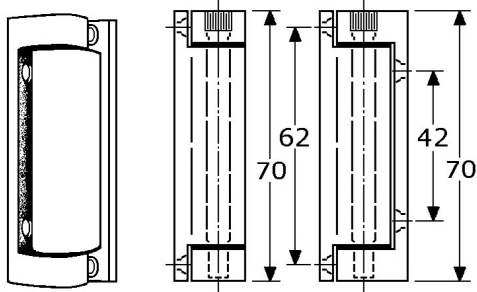
rotary ring/swivel, outside \varnothing 326mm
aluminium alloy/profile, highness 16mm
with big steel ball bearing, for 60 Kg
rotary 360° without stop (not demontable)
with white rubber stoppers prevent slipping
top ring has 6 countersunked holes to fix on table
in boxes of 1 Pcs.

925505

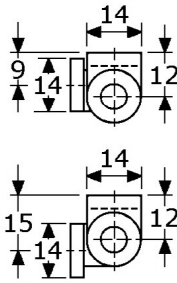
rotary ring/swivel, outside \varnothing 442mm
aluminium alloy/profile, highness 22mm
with big steel ball bearing, for 100 Kg
rotary 360° without stop (not demontable)
with white rubber stoppers prevent slipping
top ring has 6 countersunked holes to fix on table
in boxes of 1 Pcs.



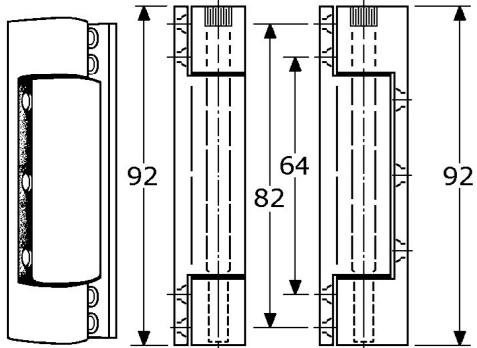
PIMEX B.V.
Coenecoop 131
2741 PJ WADDINXVEEN (NL)
Tel. (31) 182 - 61 11 66
Email: info@pimex.nl



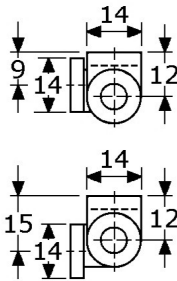
457510



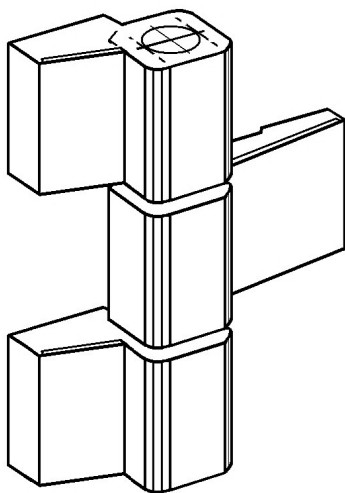
screw-on profile hinges
aluminium anodised
highness 70mm
outside profile \varnothing 14mm
with loose stainless steel milled edge pin \varnothing 7mm
with grey nylon bushes, for left and right use
with 2 countersunk holes 4mm/M4 c.t.c. 62mm
with 2 countersunk holes 5mm/M5 c.t.c. 42mm
for minimum 16mm offset doors
maximum door weight 40 Kg (3 hinges)
in boxes of 20 Pcs.



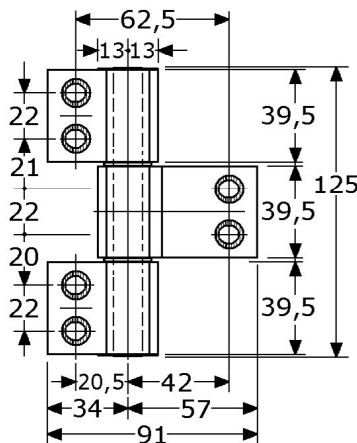
457514



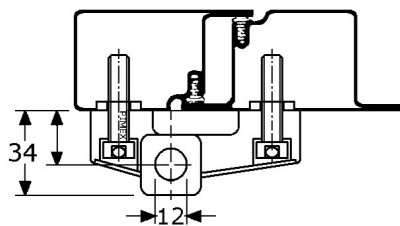
screw-on profile hinges
aluminium anodised
highness 92mm
outside profile \varnothing 14mm
with loose stainless steel milled edge pin \varnothing 7mm
with grey nylon bushes, for left and right use
with 4 countersunk holes 4mm/M4
with 3 countersunk holes 5mm/M5
for minimum 16mm offset doors
maximum door weight 60 Kg (3 hinges)
in boxes of 20 Pcs. (delivery on request)



457533



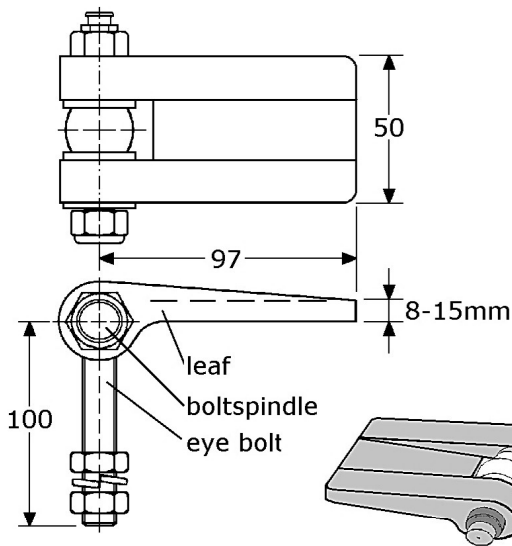
heavy duty hinges, 3-parts
aluminium anodised
highness 125mm
outside profile \varnothing 26mm
for flat mounting, widthness 34+57=91mm
with 3 aluminium covers, for left and right use
with locked up pin stainless steel \varnothing 12mm
with black nylon bushes, with black tips
3-dimensionally adjustable
unvisible mounting with 6x bolts M8 c.t.c. 62,5mm
with 6 special zinc alloy nickel plated bolts M8x26
with 15mm aluminium back-mounting plate
maximum door weight 120 Kg (2 hinges)
in boxes of 10 Pcs.



also possible:
- in stainless steel h=158mm, see page GY-394b
- in aluminium with 2-parts (457523) high 84mm
- with each 2x ball bearing stainless steel \varnothing 22,5mm (outside & inside SS-304/A2, balls SS-420 hardened)
hinges will be 2x \pm 7mm higher



PIMEX B.V.
Coenecoop 131
2741 PJ WADDINXVEEN (NL)
Tel. (31) 182 - 61 11 66
Email: info@pimex.nl

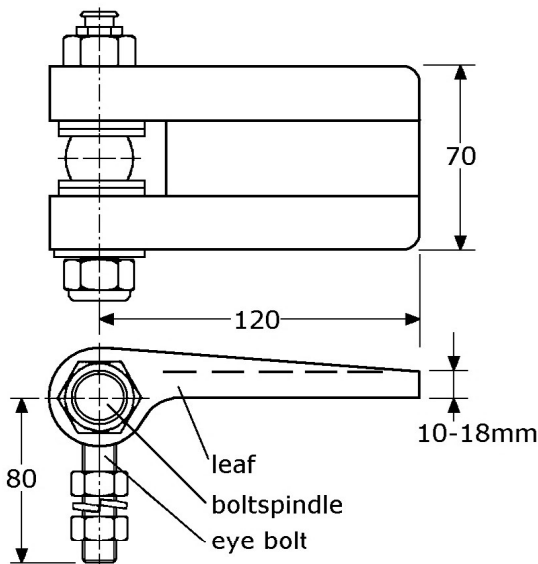


459550

heavy duty weld-on hinges M12
aluminium, unpolished
"M"-leaf 50x97mm, leaf thickness 8-15mm
diameter \varnothing 30mm
with bolt spindle stainless steel \varnothing 12mm
with brass grease nipple
with eye bolt stainless steel M12x100
in boxes of 10 Pcs.

459551

heavy duty weld-on hinges M12
aluminium, unpolished
"M"-leaf 50x97mm, leaf thickness 8-15mm
diameter \varnothing 30mm
with bolt spindle stainless steel \varnothing 12mm
with grease nipple stainless steel
with eye bolt stainless steel M12x100
in boxes of 10 Pcs.

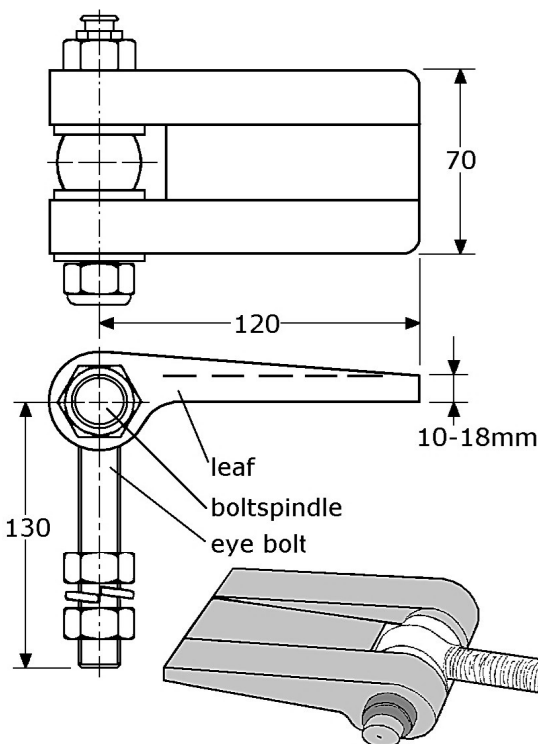


459552

heavy duty weld-on hinges M16
aluminium, unpolished
"M"-leaf 70x120mm, leaf thickness 10-18mm
diameter \varnothing 38mm
with bolt spindle stainless steel \varnothing 18mm
with brass grease nipple
with eye bolt stainless steel M16x80
in boxes of 10 Pcs.

459553

heavy duty weld-on hinges M16
aluminium, unpolished
"M"-leaf 70x120mm, leaf thickness 10-18mm
diameter \varnothing 38mm
with bolt spindle stainless steel \varnothing 18mm
with grease nipple stainless steel
with eye bolt stainless steel M16x80
in boxes of 10 Pcs.



459558

heavy duty weld-on hinges M20
aluminium, unpolished
"M"-leaf 70x120mm, leaf thickness 10-18mm
diameter \varnothing 38mm
with bolt spindle stainless steel \varnothing 18mm
with brass grease nipple
with eye bolt stainless steel M20x130
in boxes of 10 Pcs.

459559

heavy duty weld-on hinges M20
aluminium, unpolished
"M"-leaf 70x120mm, leaf thickness 10-18mm
diameter \varnothing 38mm
with bolt spindle stainless steel \varnothing 18mm
with grease nipple stainless steel
with eye bolt stainless steel M20x130
in boxes of 10 Pcs.



PIMEX B.V.
Coenecoop 131
2741 PJ WADDINXVEEN (NL)
Tel. (31) 182 - 61 11 66
Email: info@pimex.nl