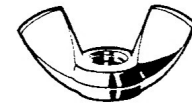


hexagon domed cap nuts
stainless steel 304/A2 or 316/A4
DIN 1587, NEN 1618



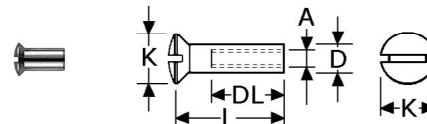
	quality A2 or A4	measure M	sw mm	highness mm	boxes of
B241509	SS-316	M 4	7	8	500
B241511	SS-316	M 5	8	10	100
B241513	SS-316	M 6	10	12	100
B241516	SS-304	M 8	13	15	100
B241517	SS-316	M 8	13	15	100
B241521	SS-316	M 10	17	18	100
B241525	SS-316	M 12	19	22	50
B241533	SS-316	M 16	24	28	50

wing nuts (american type)
stainless steel 305/1.4303
DIN 315, NEN 1625



	quality 1.4303	measure M	widthness mm	highness mm	flange ø mm	boxes of
B243210	1.4303	M 5	22	11	10	100
B243212	1.4303	M 6	26	14	12	100
B243216	1.4303	M 8	30	15	14	100
B243220	1.4303	M 10	35	17	16	50

sleeve nuts with shaft
stainless steel 303/1.4305
raised countersunk slotted head



	quality 1.4305	inside measure	inside thread	outside head	outside shaft	boxes of
B245408	1.4305	M 4x12	7	7,5	5	100
B245410	1.4305	M 5x14	10	9	6	100
B245412	1.4305	M 6x15	11	10	7,5	100
B245418	1.4305	M 8x18	12	15	10	100

table: standard metric (right) thread

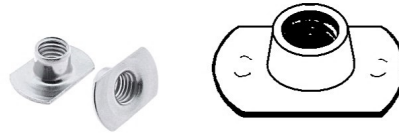
- M 3x0,5
- M 4x0,7
- M 5x0,8
- M 6x1
- M 8x1,25
- M 10x1,5
- M 12x1,75
- M 14x2
- M 16x2
- M 18x2,5
- M 20x2,5
- M 22x2,5
- M 24x3



PIMEX B.V.
Coenecoop 131
2741 PJ WADDINXVEEN (NL)
Tel. (31) 182 - 61 11 66
Email: info@pimex.nl

NUTS , stainless steel

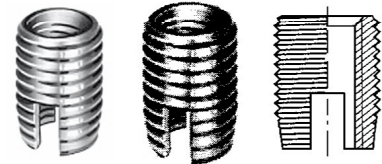
PIROSTA weld-on nuts
stainless steel 304/A2/1.4301
with flat open flange



	Quality 1.4301	inside thread	outside mm	highness mm	thickness mm	boxes of
B246212	1.4301	M 6	11x19	7,5	1	100
B246216	1.4301	M 8	14x22	8,5	1,2	100
B246220	1.4301	M 10	18x26	10,5	1,5	100
also in stock: flange with 4x down spots						
B246236	1.4301	M 8	14x22	8,5	1,2	100



PIROSTA metric screw inserts
stainless steel 303/1.4305
with conical opening & slot



	Quality 1.4305	inside thread	outside thread	highness mm	boxes of
B247208	1.4305	M 4	ø6,5	8	100
B247210	1.4305	M 5	M 8x1=fine	8,5	100
B247212	1.4305	M 6	M 10	10,5	100
B247216	1.4305	M 8	M 12x1,5=fine	15	50
with special thread for softwood:					
B247260	1.4305	M 5	ø10mm	12	100

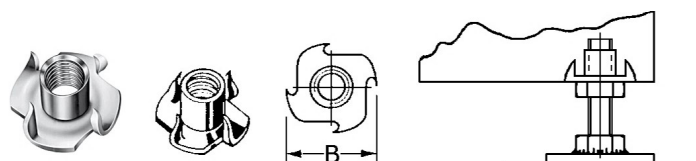


PIROSTA knock-in metric inserts
stainless steel 303/1.4305
with open top



	Quality 1.4305	inside thread	outside mm	highness mm	outside top	boxes of
B247508	1.4305	M 4	5,5	8	8	100
B247510	1.4305	M 5	6,5	10	10	100
B247520	1.4305	M 10	12,5	12	18	50

PIROSTA drive-in metric nuts
stainless steel 304/A2/1.4301
with flat open flange with 4 prongs



	Quality 1.4301	inside thread	outside mm	highness mm	highness prongs	thickness mm	boxes of
B248208	1.4301	M 4	ca. 15	8	5,5	0,8	200
B248210	1.4301	M 5	ca. 17	8	5,5	1	200
B248212	1.4301	M 6	ca. 17	8	5,5	1,25	100
B248216	1.4301	M 8	ca. 19	8	5,5	1,25	100
B248220	1.4301	M 10	ca. 25	13	9	1,5	100

hexagon nuts
stainless steel 304/A2 or 316/A4
DIN 934, NEN 1560, ISO 4032



	quality A2 or A4	measure M	sw mm	highness (0,8xD) mm	boxes of
B249406	SS-304	M 3	5,5	2,4	500
B249509	SS-316	M 4	7	3,2	500
B249511	SS-316	M 5	8	4	500
B249513	SS-316	M 6	10	5	500
B249517	SS-316	M 8	13	6,5	250
B249521	SS-316	M 10	17	8	100
B249401	SS-316	M 10x1,25-fine	17	8	100
B249525	SS-316	M 12	19	10	100
B249625	SS-316	M 12	19	10 (on request: 1.4462 duplex)	1000
B249533	SS-316	M 16	24	13	100
B249541	SS-316	M 20	30	16	50
B249549	SS-316	M 24	36	19	25

selflocking hexagon nuts with nylon insert
stainless steel 304/A2 or 316/A4
DIN 985, NEN 2452



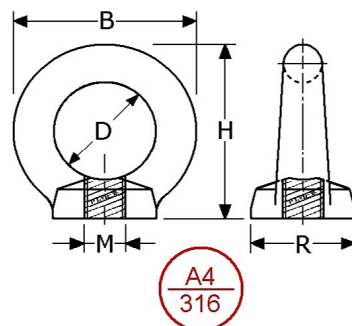
	quality A2 or A4	measure M	sw mm	highness mm	boxes of
B249808	SS-304	M 4	7	5	200
B249811	SS-316	M 5	8	5	200
B249813	SS-316	M 6	10	6	200
B249816	SS-304	M 8	13	8	200
B249821	SS-316	M 10	17	10	100
B249825	SS-316	M 12	19	12	100
B249833	SS-316	M 16	24	16	50
B249840	SS-304	M 20	30	20	25
B249849	SS-316	M 24	36	24	10



PIMEX B.V.
Coenecoop 131
2741 PJ WADDINXVEEN (NL)
Tel. (31) 182 - 61 11 66
Email: info@pimex.nl

EYE NUTS, stainless steel

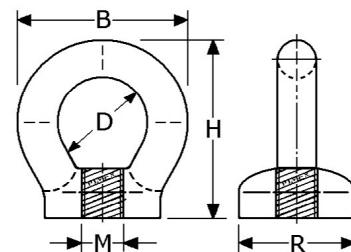
eye nuts / lifting eye nuts
stainless steel 316/A4 forged
according to DIN 582 (stronger than casting)



	quality A4	measure M	B (mm) H (mm)	D (mm) R (mm)	boxes of
B265421	SS-316	M 8	36	20	25
B265431	SS-316	M 10	45	25	25
B265441	SS-316	M 12	53	30	10
B265461	SS-316	M 20	71	40	10
B265471	SS-316	M 24	90	50	10

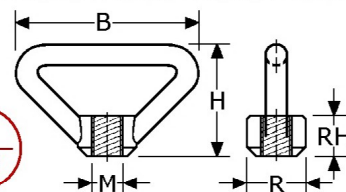
also possible: - sizes till M42 and/or stainless steel 304/A2

eye nuts
stainless steel 316/A4/1.4404 mirror polished
high quality, nice finish



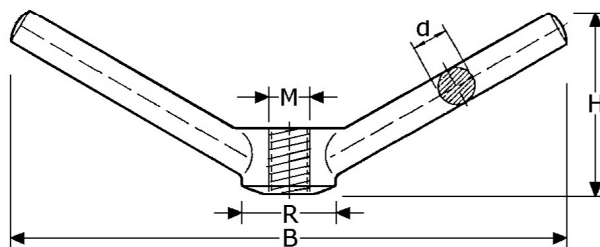
	quality A4	measure M	B (mm) widthness	H (mm) highness	D (mm) hole	R (mm) flange	breaking load (BLL)	boxes of
B265831	SS-316	M 6	25	27	13	17	1600 Kg	25
B265833	SS-316	M 8	34	36	17	22	3200 Kg	25
B265835	SS-316	M 10	42	46	22	28	4800 Kg	10
B265837	SS-316	M 12	51	56	27	34	7000 Kg	10
B265839	SS-316	M 16	51	56	27	34	8000 Kg	10

bow nuts
stainless steel 316/A4/1.4408 mirror polished
high quality, nice finish
hook 45°



	quality A4	measure M	B (mm) widthness	H (mm) highness	d (mm) thickness	R (mm) flange	RH (mm)	boxes of
B266031	SS-316	M 10	70	46	8	20	15	10
B266041	SS-316	M 12	70	46	8	20	15	10
B266051	SS-316	M 16	87	55	10	28	20	10
B266061	SS-316	M 20	106	66	12	30	23	10

wing nuts "butterfly"
stainless steel 316/A4/1.4408
electro mirror polished
forged very strong
hook 26°



	quality A4	measure M	B (mm) widthness	H (mm) highness	d (mm) thickness	R (mm) flange	RH (mm)	boxes of
B266741	SS-316	M 12	100	33	10	22	18	10
B266751	SS-316	M 16	135	43	13	30	21	10
B266761	SS-316	M 20	150	46	14	33	23	10
B266771	SS-316	M 24	220	75	19	45	38	10