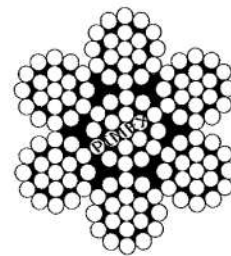


WIRE ROPE, stainless steel

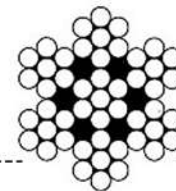


wire rope
stainless steel 316/A4/1.4401
construction 7x19 (flexible & strong)
minimum breaking load 1570 N/mm²

	quality A4	thickness (mm)		construction	breaking load (BLL)	boxes (Mtr)
161205	SS-316	2mm	(16120501)	7x19	210 Kg	roll=100
161207	SS-316	3mm	(16120700)	7x19	460 Kg	roll= 50
161209	SS-316	4mm	(16120900)	7x19	830 Kg	roll= 50
161211	SS-316	5mm	(16121100)	7x19	1300 Kg	roll= 50
161213	SS-316	6mm	(16121300)	7x19	1800 Kg	roll= 50
161217	SS-316	8mm	(16121700)	7x19	3300 Kg	roll= 50
161221	SS-316	10mm	(16122100)	7x19	5200 Kg	roll= 50



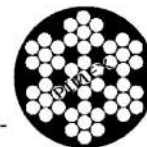
wire rope
stainless steel 316/A4/1.4401
construction 7x7
(delivery on request)



	quality A4	thickness (mm)	outside ø (mm)	construction	breaking load (BLL)	boxes (Mtr)
162201	SS-316	1mm		7x7	63 Kg	roll=150



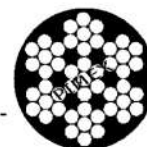
wire rope
stainless steel 316/A4/1.4401
construction 7x7, transparent PVC coated
(delivery on request)



	quality A4	thickness (mm)	outside ø (mm)	construction	breaking load (BLL)	boxes (Mtr)
162275	SS-316	2mm	3mm	7x7	210 Kg	roll=250



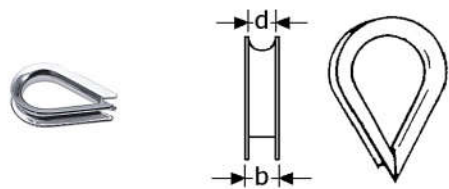
wire rope
stainless steel 316/A4/1.4401
construction 7x7, white PVC coated
(delivery on request)



	quality A4	thickness (mm)	outside ø (mm)	construction	breaking load (BLL)	boxes (Mtr)
162257	SS-316	3mm	5mm	7x7	460 Kg	roll=250
162259	SS-316	4mm	6mm	7x7	830 Kg	roll= 50



PIMEX B.V.
Coenecoop 131
2741 PJ WADDINXVEEN (NL)
Tel. (31) 182 - 61 11 66
Email: info@pimex.nl



A4
316

wire thimble
stainless steel 316/A4

	quality A4	for rope	widthness (mm)	inside (mm)	thickness (mm)	for rigging screw	boxes of
164232	SS-316	2mm	4mm	12x7mm	0,7mm	169202	50
164233	SS-316	3mm	5mm	15x9mm	1,0mm	169202	50
164234	SS-316	4mm	6,5mm	17x11mm	1,0mm	169202	50
164235	SS-316	5mm	8mm	21x13mm	1,2mm	169203	50
164236	SS-316	6mm	9mm	27x15mm	1,2mm	169204	50
164238	SS-316	8mm	12mm	30x18mm	1,5mm	169206	25
164241	SS-316	10mm	14,5mm	44x23mm	1,5mm	169209	25
164243	SS-316	12mm	17,5mm	52x28mm	1,5mm	169210	25

A4
316

ferrules for wire rope
stainless steel 316/A4/1.4401



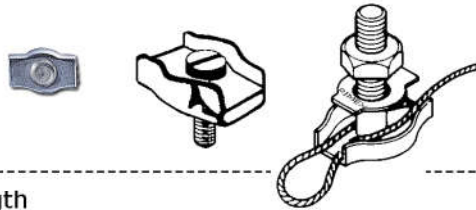
	quality A4	for 2x rope	length (mm)	inside (mm)	thickness (mm)	boxes of
163253	SS-316	1mm	5mm	1,2x2,4mm	0,7mm	10
163255	SS-316	2mm	9mm	2,5x4,5mm	1,0mm	10
163257	SS-316	3mm	11mm	3,5x7,5mm	1,0mm	10
163259	SS-316	4mm	14mm	4,5x9,2mm	1,5mm	10
163261	SS-316	5mm	18mm	5,6x11,5mm	2,0mm	10
163263	SS-316	6mm	21mm	6,8x13,5mm	2,5mm	10
163265	SS-316	8mm	21mm	9,0x17,5mm	3,0mm	5



PIMEX B.V.
Coenecoop 131
2741 PJ WADDINXVEEN (NL)
Tel. (31) 182 - 61 11 66
Email: info@pimex.nl

WIRE ROPE CLIPS, stainless steel

wire rope clip
stainless steel 316/A4
with single bolt
(simplex)



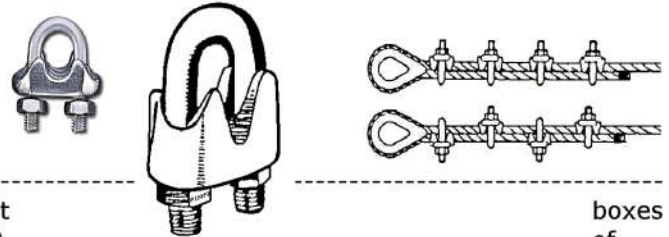
	quality A4	for rope	bolt	length (mm)	boxes of
166203	SS-316	2 + 3mm	M 4	18mm	50

staaldraadklemmen
wire rope clip
stainless steel 316/A4
with double bolt
(duplex)



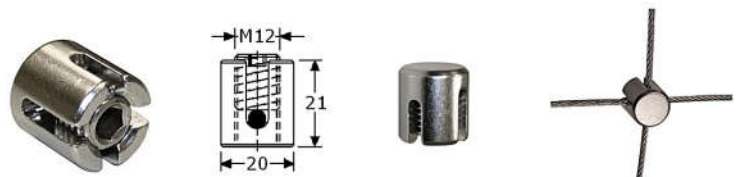
	quality A4	for rope	bolt	length (mm)	boxes of
166254	SS-316	4 + 5mm	M 5	43mm	(per 50 Pcs.; delivery on request)

wire rope clip
stainless steel 304/A2 or 316/A4
"D"-model with U-bolt
with nuts



	quality A2 or A4	for rope	bolt	U-bolt (mm)	boxes of
167233	SS-316	2 + 3mm	M 3	2,6mm	50
167234	SS-316	3 + 4mm	M 4	3,5mm	50
167235	SS-316	4 + 5mm	M 5	4,5mm	50
167236	SS-316	5 + 6mm	M 6	5,2mm	25
167241	SS-316	8+10mm	M 8	7mm	25
167213	SS-304	10+12mm	M 10	9mm	10

wire rope clip
stainless steel 316/A4
for crossing of wire ropes
with hexagon socket set screw M12

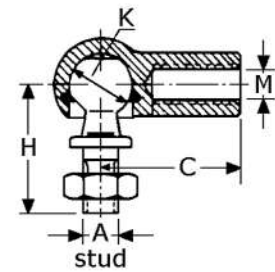


	quality A4	for rope	bolt	highness (mm)	outside (mm)	boxes of
165203	SS-316	3mm	M 12	19mm	20mm	(per 25 Pcs.; delivery on request)
165204	SS-316	4mm	M 12	21mm	20mm	(per 25 Pcs.; delivery on request)



PIMEX B.V.
Coenecoop 131
2741 PJ WADDINXVEEN (NL)
Tel. (31) 182 - 61 11 66
Email: info@pimex.nl

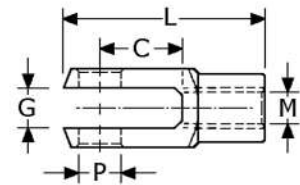
angle joint
 stainless steel 303/1.4305
 with ball stud with outside metric-right
 with tapped hole inside metric-right
 swivels 36°, with stainless steel clip



	quality A2	(M) hole	(A) stud	length (C) till centre	highness (H) (mm)	ball (K) (mm)	boxes of
168256	SS-303	M 6	M 6	25mm	23mm	10mm	10
168258	SS-303	M 8	M 8	30mm	29mm	13mm	10
168260	SS-303	M 10	M 10	35mm	36mm	16mm	10
168262	SS-303	M 12	M 12	35mm	36mm	16mm	10

on request also possible with left-hand thread

clevis with inside metric (normal = right)
 stainless steel 303/1.4305
 with round hole for bolt with head

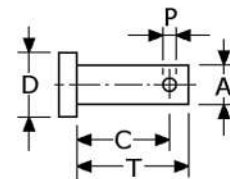


	quality A2	(M) hole	hole (P) (mm)	length (C) till centre	length (L) total	opening (G) inside	boxes of
170216	SS-303	M 8	ø8mm	32mm	42mm	8mm	10
170218	SS-303	M 8	ø8mm	48mm	58mm	8mm	10
170220	SS-303	M 10	ø10mm	40mm	52mm	10mm	10
170222	SS-303	M 10	ø10mm	60mm	72mm	10mm	10
170224	SS-303	M 12	ø12mm	48mm	62mm	12mm	10
170226	SS-303	M 12	ø12mm	72mm	86mm	12mm	10
170232	SS-303	M 16	ø16mm	64mm	83mm	16mm	10
170234	SS-303	M 16	ø16mm	96mm	115mm	16mm	10

on request also possible with left-hand thread



bolt with head for clevis
 stainless steel 316/A4/1.4401
 with hole for ring pin or cotter pin



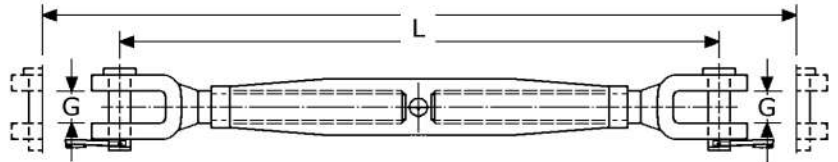
	quality A4	(A) (mm)	hole (P) (mm)	length (C) till centre	length (T) (mm)	head (D) diameter	boxes of
BR 258009	SS-316	ø8mm	ø2mm	20mm	24mm	ø12mm	20
258011	SS-316	ø10mm	ø3mm	24mm	29mm	ø14mm	20
258013	SS-316	ø12mm	ø4mm	30mm	35mm	ø17mm	20
258017	SS-316	ø16mm	ø4mm	38mm	46mm	ø21mm	20

for more ring pin, cotter pin, drop nose pin, see page GB-254 - GB-257



PIMEX B.V.
 Coenecoop 131
 2741 PJ WADDINXVEEN (NL)
 Tel. (31) 182 - 61 11 66
 Email: info@pimex.nl

rigging screws (turnbuckle)
stainless steel 316/A4
closed house mirror polished
with 2x SS-316 fork-fork
and SS-316 pin
blocked by SS-316 key ring



	quality	(M)	length (L)	fork (G)	pin ϕ	boxes
	A2 or A4	thread	(mm)	inside	(mm)	of
169202	SS-316	M 5	135-180mm	8mm	5mm	10
169203	SS-316	M 6	140-210mm	9mm	6mm	10
169204	SS-316	M 8	165-240mm	10mm	8mm	10
169205	SS-316	M 10	195-285mm	12mm	9mm	10
169206	SS-316	M 12	245-360mm	14mm	12mm	10
169209	SS-316	M 16	325-455mm	17mm	16mm	10
169210	SS-304	M 20	385-545mm	27mm	19mm	10



rigging screws (turnbuckle)
stainless steel 316/A4 mirror polished
closed house with bronze inserts
with 2x SS-316 fork-fork
heavy duty, with SS-316 pin
blocked by SS-316 key ring



	quality	(M)	length (L)	fork (G)	pin ϕ	breaking	boxes
	A4	thread	(mm)	inside	(mm)	load (BLL)	of
169222	SS-316	M 22	470/650mm	30mm	22mm	17000 Kg	(on request)
169224	SS-316	M 24	540/730mm	30mm	25mm	20000 Kg	(on request)

wire rope swageless stud thread terminal
stainless steel
for easy fitting of wire rope
stainless steel 316/A4 conical nut
with inside brass pressure ring
breaking load = 95% of the BLL of the wire rope
for changing with jaw (right) of the turnbuckle



	quality	for	(M)	length	length	for	boxes
	A4	rope (d)	thread	metric thread	total	rigging screw	of
169384	SS-316	4mm	M 8	43mm	100mm	169204	(on request)
169385	SS-316	5mm	M 10	54mm	117mm	169205	(on request)
169386	SS-316	6mm	M 12	65mm	145mm	169206	(on request)
169388	SS-316	8mm	M 16	82mm	182mm	169208	(on request)



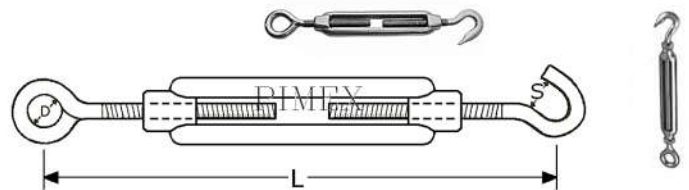
PIMEX B.V.
Coenecoop 131
2741 PJ WADDINXVEEN (NL)
Tel. (31) 182 - 61 11 66
Email: info@pimex.nl

rigging screws (turnbuckle)
stainless steel 316/A4
open house
with eye + eye



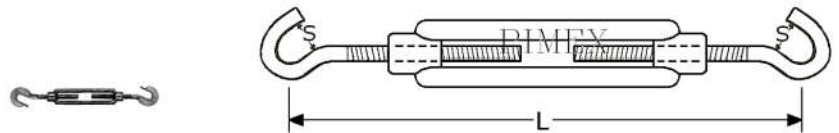
	quality A4	(M) thread	eye \varnothing inside	house length	boxes of
169252	SS-316	M 5	8mm	70mm	(50 Pcs; on request)
169253	SS-316	M 6	10mm	90mm	(50 Pcs; on request)
169254	SS-316	M 8	14mm	120mm	(50 Pcs; on request)
169255	SS-316	M 10	16mm	150mm	(50 Pcs; on request)

rigging screws (turnbuckle)
stainless steel 316/A4
open house
with eye + open hook



	quality A4	(M) thread	eye \varnothing inside	house length	boxes of
169262	SS-316	M 5	8mm	70mm	(50 Pcs; on request)
169263	SS-316	M 6	10mm	90mm	(50 Pcs; on request)
169264	SS-316	M 8	14mm	120mm	(50 Pcs; on request)
169265	SS-316	M 10	16mm	150mm	(50 Pcs; on request)

rigging screws (turnbuckle)
stainless steel 316/A4
open house
with open hook + open hook



	quality A4	(M) thread	eye \varnothing inside	house length	boxes of
169272	SS-316	M 5	8mm	70mm	(50 Pcs; on request)
169273	SS-316	M 6	10mm	90mm	(50 Pcs; on request)
169274	SS-316	M 8	14mm	120mm	(50 Pcs; on request)
169275	SS-316	M 10	16mm	150mm	(50 Pcs; on request)



PIMEX B.V.
Coenecoop 131
2741 PJ WADDINXVEEN (NL)
Tel. (31) 182 - 61 11 66
Email: info@pimex.nl