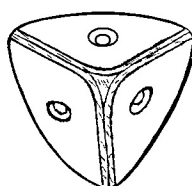
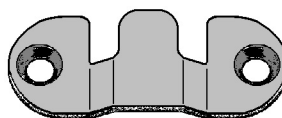


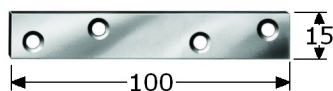
281212

connecting plate 41x16,3mm
stainless steel 304/A2 satin
thickness 2mm
two pieces together = thickness 4,5mm ###
with 2 countersunk screwholes (3,5mm)
in boxes of 100 Pcs. and 500 Pcs.



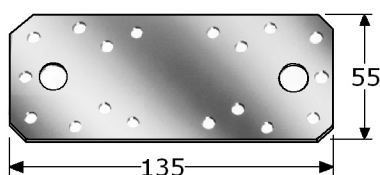
285236

case corner braces 36x36x36x0,7mm
stainless steel 304/A2 unpolished
with total 3 round holes (3mm)
in boxes of 50 Pcs.



286229

connecting plate 100x15x2mm
stainless steel 304/A2 unpolished
with 4 countersunk screwholes
(only 20 Pcs. possible)



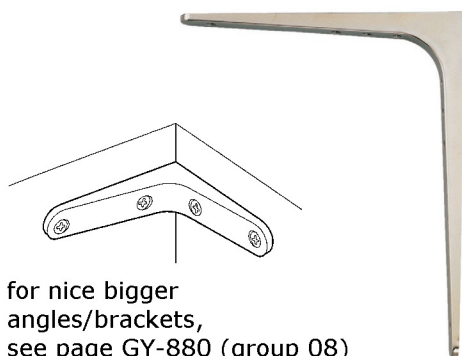
286235

connecting plate 135x55x2mm
stainless steel 316/A4 unpolished
universal, with small & big holes
in boxes of 50 Pcs.



286249

flat shaped angle 120x120x2mm
stainless steel 304/A2 unpolished
widthness 18mm
with 6 round holes $\varnothing 4,8$ mm
in boxes of 50 Pcs.



for nice bigger
angles/brackets,
see page GY-880 (group 08)



PIMEX B.V.
Coenecoop 131
2741 PJ WADDINXVEEN (NL)
Tel. (31) 182 - 61 11 66
Email: info@pimex.nl