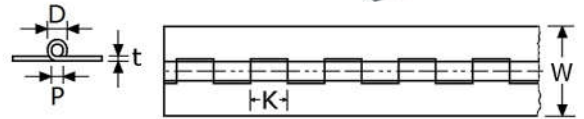


PIANO HINGES, stainless steel



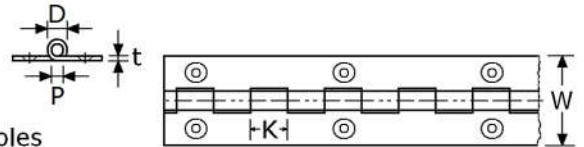
piano hinges with flat rolled construction
stainless steel 304/A2/1.4301 satin (@=mirror)
lengths of 3,5 meter, without screwholes



	quality A2	thickness (t)	width (W)	pin (P)	knuckle ± diam.(D)	knuckle length (K)	no holes	in long boxes (1 Lng: 3,5 Mtr)
35122008	SS-304	0,8mm	20mm	1,7mm	3,3mm	15mm	no holes	30 Lng: 105 Mtr
35122508	SS-304	0,8mm	25mm	1,7mm	3,3mm	15mm	no holes	30 Lng: 105 Mtr
35123208	SS-304	0,8mm	32mm	1,7mm	3,3mm	15mm	no holes	30 Lng: 105 Mtr
35123210	SS-304	1,0mm @	32mm	1,7mm	3,9mm	15mm	no holes	30 Lng: 105 Mtr
35124008	SS-304	0,8mm	40mm	1,7mm	3,3mm	15mm	no holes	30 Lng: 105 Mtr



piano hinges with flat rolled construction
stainless steel 304/A2/1.4301 satin (@=mirror)
lengths of 3,5 meter, with countersunk screwholes

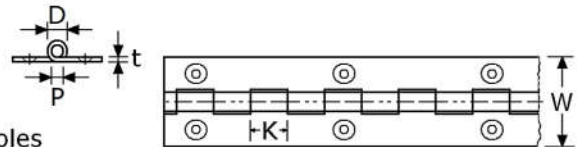


	quality A2	thickness (t)	width (W)	pin (P)	knuckle ± diam.(D)	knuckle length (K)	with holes	in long boxes (1 Lng: 3,5 Mtr)
35222008	SS-304	0,8mm	20mm	1,7mm	3,3mm	15mm	2,5mm	30 Lng: 105 Mtr
35222508	SS-304	0,8mm	25mm	1,7mm	3,3mm	15mm	2,5mm	30 Lng: 105 Mtr
35223208	SS-304	0,8mm	32mm	1,7mm	3,3mm	15mm	2,5mm	30 Lng: 105 Mtr
35224008	SS-304	0,8mm	40mm	1,7mm	3,3mm	15mm	2,5mm	30 Lng: 105 Mtr
35425010	SS-304	1,0mm @	50mm	1,7mm	3,9mm	15mm	3,5mm	15 Lng: 52,5 Mtr

for small screws with countersunk head like 2,5x12 2,5x16 2,5x20, see page B-270



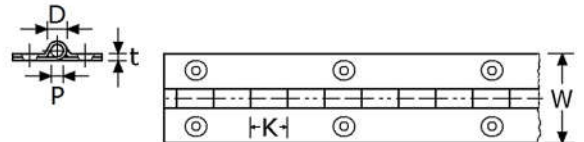
piano hinges with flat rolled construction
stainless steel 316/A4/1.4401
unpolished, sea-water continually
lengths of 3,5 meter, with countersunk screwholes



	quality A4	thickness (t)	width (W)	pin (P)	knuckle ± diam.(D)	knuckle length (K)	with holes	in long boxes (1 Lng: 3,5 Mtr)
35523210	SS-316	1,0mm	32mm	2mm	4,4mm	15mm	3mm	20 Lng: 70 Mtr

for screws with countersunk head, see page B-270

piano hinges with rolled construction
stainless steel 304/A2/1.4301 satin polished
material 0,6mm double folded till 1,2mm
fine polishing, with countersunk screwholes
only in pieces of 300mm or 900mm



	quality A2	thickness (t)	width (W)	pin (P)	knuckle ± diam.(D)	knuckle length (K)	with holes	in boxes
350233	SS-304	1,2mm	30mm	2,3mm	3,5mm	15mm	2,5mm	20 Pcs. of 300mm
350239	SS-304	1,2mm	30mm	2,3mm	3,5mm	15mm	2,5mm	20 Pcs. of 900mm



all these mentioned piano hinges
in stainless steel are normally in our STOCK

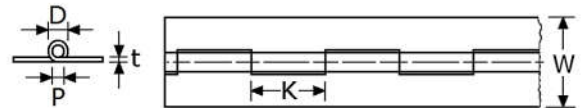
other measures on request possible



PIMEX B.V.
Coenecoop 131
2741 PJ WADDINXVEEN (NL)
Tel. (31) 182 - 61 11 66
Email: info@pimex.nl

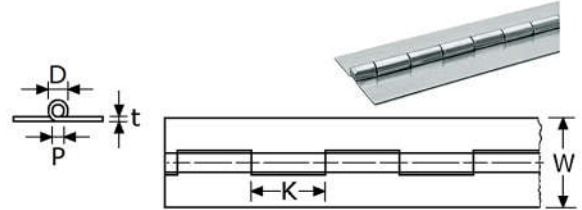


piano hinges with flat rolled construction
stainless steel 304/A2/1.4301 unpolished
lengths of 3,5 meter, without screwholes



	quality A2	thickness (t)	width (W)	pin (P)	knuckle ± diam.(D)	knuckle length (K)	no holes	in long boxes (1 Lng: 3,5 Mtr)
35123215	SS-304	1,5mm	32mm	3mm	6,1mm	30mm	no holes	15 Lng: 52,5 Mtr
35124015	SS-304	1,5mm	40mm	3mm	6,1mm	30mm	no holes	10 Lng: 35 Mtr
35124520	SS-304	2,0mm	45mm	6mm	10,3mm	30mm	no holes	6 Lng: 21 Mtr
35125015	SS-304	1,5mm	50mm	3mm	6,1mm	30mm	no holes	8 Lng: 28 Mtr
35125030	SS-304	3,0mm	50mm	6mm	12,4mm	30mm	no holes	4 Lng: 14 Mtr
35126015	SS-304	1,5mm	60mm	3mm	6,1mm	30mm	no holes	8 Lng: 28 Mtr
35127020	SS-304	2,0mm	70mm	6mm	10,3mm	30mm	no holes	5 Lng: 17,5 Mtr
35128020	SS-304	2,0mm	80mm	6mm	10,3mm	30mm	no holes	4 Lng: 14 Mtr
35129930	SS-304	3,0mm	100mm	6mm	12,4mm	30mm	no holes	3 Lng: 10,5 Mtr

piano hinges with flat rolled construction
stainless steel 316/A4/1.4401 unpolished,
sea-water continually lengths of 3,5 meter, without screwholes

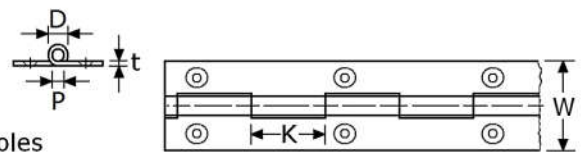


	quality A4	thickness (t)	width (W)	pin (P)	knuckle ± diam.(D)	knuckle length (K)	no holes	in long boxes (1 Lng: 3,5 Mtr)
35624015	SS-316	1,5mm	40mm	3mm	6,1mm	30mm	no holes	10 Lng: 35 Mtr
35628020	SS-316	2,0mm	80mm	6mm	10,3mm	30mm	no holes	4 Lng: 14 Mtr
35629930	SS-316	3,0mm	100mm	6mm	12,4mm	30mm	no holes	3 Lng: 10,5 Mtr
35694042	SS-316	4,0mm	140mm	12mm	20,4mm	30mm	no holes	length = 2,5 Mtr

for piano hinge 32x1mm in stainless steel 316/A4/1.4401, see page GY-350



piano hinges with flat rolled construction
stainless steel 304/A2/1.4301 unpolished
lengths of 3,5 meter, with countersunk screwholes



	quality A2	thickness (t)	width (W)	pin (P)	knuckle ± diam.(D)	knuckle length (K)	with holes	in long boxes (1 Lng: 3,5 Mtr)
35224015	SS-304	1,5mm	40mm	3mm	6,1mm	30mm	3mm	10 Lng: 35 Mtr
35225015	SS-304	1,5mm	50mm	3mm	6,1mm	30mm	3mm	8 Lng: 28 Mtr
35525015	SS-316	1,5mm	50mm	3mm	6,1mm	30mm	3,5mm	8 Lng: 28 Mtr
35226015	SS-304	1,5mm	60mm	3mm	6,1mm	30mm	3,5mm	8 Lng: 28 Mtr
35228020	SS-304	2,0mm	80mm	6mm	10,3mm	30mm	4mm	4 Lng: 14 Mtr

for screws with countersunk head, see page GB-270



all these mentioned piano hinges
in stainless steel are normally in our STOCK

other measures on request possible

for piano hinges in aluminium, see page GF-455



PIMEX B.V.
Coenecoop 131
2741 PJ WADDINXVEEN (NL)
Tel. (31) 182 - 61 11 66
Email: info@pimex.nl